



**BREAKTHROUGH TECHNOLOGY.
HEAVY DUTY PERFORMANCE.**



Epson's unique inkjet printer with tractor feeder delivers unsurpassed durability, endurance and printout quality to withstand the demanding conditions of the chemical and logistics industries. With the reliability to last 6x longer than conventional inkjet printers and exceptional ink capacity that allows longer continuous printing, frequent downtime will be a thing of the past.



C830

-  Print
-  High Capacity
-  High Speed Printing
-  Power Savings
-  Cost Effective

IT'S IN THE DETAILS.

Assured reliability

Rated up to 600,000 pages in its lifetime.

High-capacity ink cartridges

Prints large volumes continuously with greater savings and reduced downtime.

Sharper printouts

Durable pigment ink lets you print without the worry of smudges and fading.

Whether it's the chemical or logistics industries, Epson's inkjet printer with a tractor feeder is built to meet the toughest label printing specifications. With a long life suited for high print volume operations, high-capacity ink cartridges and sharp printouts on ultra-durable ink, business will run as reliably as your next printout.



Uninterrupted Heavy-duty Performance with Reduced Downtime

Assured Reliability

Epson's C830 inkjet printer is tough enough to handle the needs of industries and medical institutions that cannot afford downtime. With an impressive lifecycle of 600,000 pages* – 6x longer than conventional inkjet printers – downtime is dramatically reduced while the bottom line is improved with a lower total cost of ownership.

* When printing on 241.3 mm x 279.4 mm (9.5" x 11") paper. Varies depending on usage environment, print pattern and type of paper used.

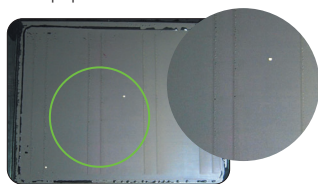
Easy Paper Handling

Even the best printers jam. With Epson technology, clearing paper jams is quick and fuss free. The C830 automatically releases paper guide when a jam is detected, allowing for the rapid removal and re-setting of media. Manual release can also be performed with a simple one-touch operation. Additionally, the top cover slides open easily for quick removal and print restart.

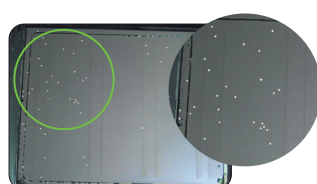
Revolutionary Print-head Protection

Printers that use fanfold paper tend to collect paper dust on the print head, which results in frequent nozzle clogging and missing ink dots. Epson's head protection system drastically reduces the accumulation of dust and dirt, providing longer continuous operation between periodic maintenance.

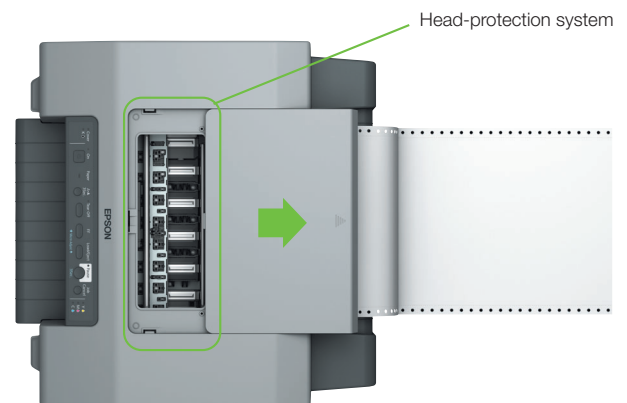
Paper-edge guide protects print head from paper dust.



Head-protection system



No head-protection system



The top cover slides open – a convenient safety feature that stops operation.

MODEL NUMBER	C830
Print Technology	MicroPiezo® ink jet technology
Print Resolution	
Plain Media	Up to 720 x 720 dpi
Glossy Media	Up to 5760 x 1440 dpi **
Ink Cartridge	Pigment ink
Individual Cartridges	
Black	GJIC4(K) x 1
Cyan	GJIC4(C) x 1
Magenta	GJIC4(M) x 1
Yellow	GJIC4(Y) x 1
Print Speed †²	
Super Draft Mode	19.7 ppm
Draft Mode	19.7 ppm
Normal Mode	18.1 ppm
Fine Mode	10.2 ppm
Extra Fine 1 Mode	3.5 ppm
Extra Fine 2 Mode	3.5 ppm
Extra Fine 3 Mode	1.3 ppm
Paper Feeding Method	Push tractor feed (rear in / front out)
Paper Feed Speed	Continuous feed 66.7ms / inch
Media Form	Continuous with sprocket holes
Media Type	Plain, Glossy, Medicine Bag, Plain Label, Matte Label, Synthetic Label, Glossy Label
Media Dimension	
Width	76.2 - 241.3 mm (3" - 9.5")
Length †³	12.7 - 558.8 mm (0.5" - 22")
Thickness †⁴	0.065 - 0.14 mm (0.0025" - 0.0055")
Weight (1000 sheets) †⁴	45 - 110 kg
Printable Area	
Maximum Printable Area Width	203.2 mm (8")
Left Margin	13.0 mm (0.51")
Right Margin	13.0 mm (0.51") †⁵
Top Margin	2.0 mm (0.08")
Bottom Margin	2.0 mm (0.08")
Barcode Font (Printer Driver Built-in)	
Barcode	Code 39, Code 128, Interleaved 2 of 5
Two-dimensional Code	QR Code
Barcode Font (ESC/P Command)	EAN-13, EAN-8, Interleaved 2 of 5 (ITF), UPC-A, UPC-E, Code39, Code128, POSTNET
Interface	USB 1.1/ 2.0 Parallel (IEEE-1284 Compatibility mode, Nibble mode) LAN 100BASE-TX/10BASE-T
Operating Temperature / Humidity	10 - 35 °C / 20 - 80 % RH
Storage Temperature / Humidity	-20 - 40 °C / 5 - 85 % RH
Reliability	
Total Print Volume	0.6 million sheets [Paper size: 241.3 x 279.4 mm (9.5" x 11")]
Overall Dimensions (D x W x H)	465 x 464 x 224 mm
Weight	Approx. 12.2kg (without ink cartridge)
Power Supply	Dedicated AC Adapter
Power Consumption	
Printing	Approx. 33W (mean, ISO/IEC 10561 letter pattern)
Standby	Approx. 8W (in sleep mode approx. 2.9W)
Rated Voltage	AC 110 - 240 V (AC adaptor)
Rated Frequency	50 - 60 Hz
Acoustic Noise	
Silent Feed ON	Approx. 48 dB(A)
Silent Feed OFF	Approx. 54 dB(A)
EMC Standards	CNS13438 Class A
Safety Standards	FCC (Class A), UL/C-UL, EN60950, CE Marking (EMC Directive (Class A), VCC1 (Class A), Singapore Safety Standard)
Operating System	Microsoft® Windows® XP 32bit (SP3) / 64bit (SP2) Microsoft® Windows Vista® 32bit / 64bit (SP2) Microsoft® Windows® 7 32bit / 64bit Microsoft® Windows Server® 2003 Microsoft® Windows Server® 2008 / 2008 R2 Microsoft® Windows® 8 32bit / 64bit Microsoft® Windows Server® 2012 (64bit)

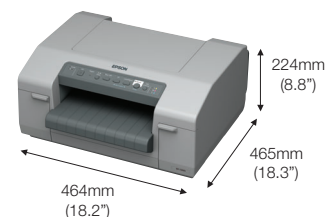
Usage Restrictions:

When this product is used for applications requiring high reliability / safety such as transportation devices related to aviation, rail, marine, automotive etc.; disaster prevention devices; various safety device etc; or functional / precision device etc, you should use this product only after giving consideration by inclusion of fail-safes and redundancies into your design to maintain safety and total system reliability. Because this product was not intended for use in applications requiring extremely high reliability / safety such as aerospace equipment, main communication equipment, nuclear power control equipment, or medical equipment related to direct medical care etc, please make your own judgment on this product's suitability after full evaluation.

Epson ColorWorks ink is not intended for direct food contact.

Dimensions & Weight

Weight: Approx. 12.2 kg (28.89lbs)



Main Unit

C11CC68021 C830 Colour Inkjet Label Printer

Consumables

C13S020559 GJIC4(K) Ink Cartridge Black
C13S020560 GJIC4(C) Ink Cartridge Cyan
C13S020561 GJIC4(M) Ink Cartridge Magenta
C13S020562 GJIC4(Y) Ink Cartridge Yellow

dpi: Dots per 25.4mm (dots per inch)
ppm: Pages per minute

†¹ Print mode: Extra Fine 3 Mode

†² The print speed measured based on paper size of 9.5" x 11".

†³ Printing on continuous paper when 139.7mm (5.5") or less is not supported.

†⁴ Plain paper

†⁵ When paper width is 229.2mm or wider, the width of the printable area remains at 203.2mm (max.) and the right margin expands up to 25.1mm, depending on paper width.

©2019 Epson Singapore Pte Ltd. All Rights Reserved. Reproduction in part or in whole, without the written permission from Epson, is strictly prohibited.

EPSON and EXCEED YOUR VISION are registered trademarks of Seiko Epson Corporation.

All other product names and other company names used herein are for identification purposes only and are the trademarks or registered trademarks of their respective owners.

Epson disclaims any and all rights in those marks. Print samples shown herein are simulations. The actual product design and contents may vary. Specifications are subject to change without notice and may vary between countries. Please check with local Epson offices for more information.

Information correct as at February 2019